



# Macandrew Bay School



*Simply the best for our children.*

27 May 2016

Dear Parents and Caregivers

## **BOT ELECTIONS**

Thank you to all of you who have been thinking about our Board of Trustee Elections and to those of you who have agreed to be nominated.

We have had more than five nominations so that means an election will be necessary. Irene Cron is our returning officer so she will send out voting forms to all parents and caregivers on the voting roll. All voting papers must be returned or mailed by the 3<sup>rd</sup> of June. Please take the time to vote and return your forms.

Being on the Board of Trustees is an important governance role and we really value the fantastic job our current Board of Trustees has done over the past three years. Previous Boards have also done a great job and I am sure the new BOT will be just the same. We are very lucky to have highly competent and committed parents and caregivers in our community who are willing to give of their time and energy for the benefit of the school, the children and the community.

## **KIDS DISCO**

A very big thank you to the wonderful team of parents who did such a great job of organizing and running the Disco on Friday night last week. The children who came loved it and had a great time!

A big thanks to Magic Kids too for providing Dan the D.J.

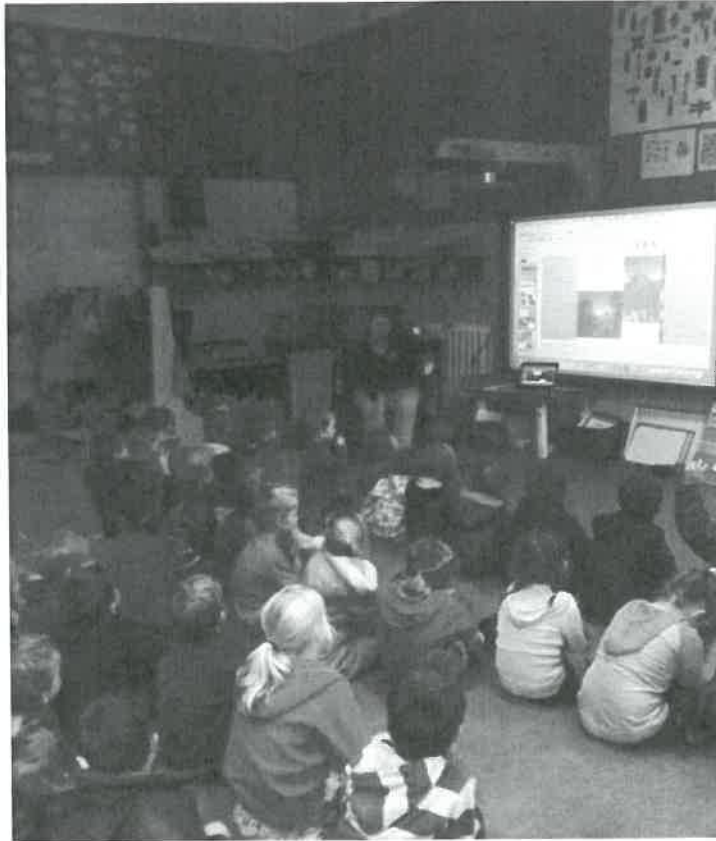
## **JUNIOR SCHOOL READING BOOKS**

**Help** – Can you please check that Reading Books are being returned to school promptly. We are finding that some of our sets are missing copies so it means it does limit the books we can use with our groups.

Many thanks – Junior Teachers'

## **SPEAKER THIS WEEK – ANGELA BRANDT**

On Monday this week we were lucky enough to have Angela Brandt a Scientist with a passion for Ecology come along and spoke to all the children about creatures and their survival needs.



### **ROAD SAFETY – POLICE EDUCATION OFFICER**

For the next two weeks our Police Education Officer John Somerfield will come and work with the four youngest classes, including Tui class, on safe walking, scootering etc. There will be a big focus on Road Safety. He will work with the three older classes at a different time.

This should be very helpful in view of our recent concerns and near miss incidents around road safety.

### **ROAD SAFETY INTEREST GROUP**

We plan to have a quick meeting at school on Wednesday 8<sup>th</sup> of June to discuss how we can make it safer for our children walking around Macandrew Bay as they come to and from school.

The meeting will be at 3.15pm at the school in the staffroom. All interested parents and teachers welcome.

We remember parents making a submission about this very issue in recent years and notice that the issue has not gone away, though nothing much has changed to date, some of those parents may possibly be able to come to our meeting and we will certainly share your submission if you can't.

## **ROAD CROSSING**

We are concerned about our children crossing the road near the steps directly across the road from the Macandrew Bay Beach as we had a report of a near miss.

Please could children cross the road near the dairy. We are wondering if there would be any kind parents interested in helping children cross the road at the crossing point where the rails are near the bus stop before school around 8.30am. Staff will be supervising this in the afternoon after school.

Please complete the slip at the back of the newsletter if you are able to help.

A reminder if children are walking, scooting or biking to school they should be wearing their **yellow fluoro vests** issued by the school for some of the time. Care needs to be taken crossing from the dairy across towards the Plunket rooms too.

## **BUILDING CLUB**

A big thank you to Bruce Bond and Gavin O'Brien who are keen to supervise the building club up in the Junior School one lunchtime a week. I am sure the children will love it. If anyone else is interested the more the merrier! Building club will start next week.

Thank you to Alan Webber for the wood he has donated. If anyone else has any other materials they would like to donate we would be very grateful.

Please email Nic – [nbrown@macandrewbay.school.nz](mailto:nbrown@macandrewbay.school.nz) or call in and see her in Kakano.

## **ENTERTAINMENT BOOKS**

We have had a person with a surname of Smith paid for an entertainment book into our bank account if this is you or you know who it is could please contact Irene Cron in the office or phone 4761004.

## **STUDENTS GOING ON HOLIDAY DURING TERM TIME**

If you are taking your child out of school for a holiday or long weekend during term time, we ask you to please write a note/email stating the dates and reason of the absence and give to Irene in the office or email [admin@macandrewbayschool.nz](mailto:admin@macandrewbayschool.nz).

## **PARENT ASSEMBLY DATES THIS TERM**

Friday 3<sup>rd</sup> June - Lead by Tui Class  
Friday 1<sup>st</sup> July - Lead by Rata Class

Assemblies start at 2.15pm in our new Learning Hub – Tutahi (A place where we stand together)

## **OTAGO MUSEUM TRIPS THIS TERM**

We have swapped two of the classes days over – **Toroa** and **Korimako** so there is a change for children and parents in those two classes from previous newsletters.

The dates are organised as follows:

### **Tuesday 7<sup>th</sup> June**

- Tui class (Mrs B) 10.00am – 11.30am at Museum  
(Leaving on the bus at 9.30am)
- Karearea Class (Mr. Direen) 11.45am – 1.15pm at Museum  
(Leaving on bus at 11.15am)

### **Friday 10<sup>th</sup> June**

- Kowhai class (Miss Crampton) 10.00am – 11.30am at Museum  
(Leaving on bus at 9.30am)
- Korimako Class (Mr. Mitchell) 11.45am – 1.15pm at Museum  
(Leaving on bus at 11.15am)

### **Monday 13<sup>th</sup> June**

- Kakano class (Miss Brown) 10.00am – 11.30am at Museum  
(Leaving on bus at 9.30am)
- Rata class (Mrs Wells) 11.45am – 1.15pm at Museum  
(Leaving on bus at 11.15am)

### **Tuesday 14<sup>th</sup> June**

- Toroa class (Mrs Ward) 10.00am – 11.30am at Museum  
(Leaving on bus at 9.30am)

We would love to have parents to come and help with the supervision and learning on our trips so if you would like to come with your child's class could you please fill in the return slip at the end of this newsletter and return it to school as soon as possible.

## **TEACHER ONLY DAY – FRIDAY 8<sup>th</sup> JULY**

The school will be closed for instruction Friday 8<sup>th</sup> July, which is the last day of term to allow the teaching staff to all attend a course on Writing and Spelling that day. We will work an extra day in December to make up for this at the end of Term 4. This is a great way for us all to attend an extremely useful piece of professional development without it costing the school a lot for relievers. It is many years since we had a Teacher Only Day in school time so we are hoping by giving families lots of notice you will be able to make alternative arrangements.

## **MID YEAR REPORTS AND PARENT TEACHER INTERVIEWS**

Reports will still go home in the second to last week of term but we have decided to spread follow up interviews over the last two weeks. We will have an afternoon and evening session on Thursday 30<sup>th</sup> of June and then will have an afternoon session on Wednesday 6<sup>th</sup> July in the last week.

## **SAUSAGE SIZZLE FRIDAY 27<sup>th</sup> MAY**

Thank you to the very kind parents who come along and cooked the sausages for the children today – Wal O'Neill and Richard Lawrence and Phillipa Jack with the Juicies.

## **WHANAU HUI – WEDNESDAY 15<sup>TH</sup> JUNE**

Just a heads up to the whanau of our Maori students that our next Whanau Hui will be held in the Staffroom after school on Wednesday the 15<sup>th</sup> of June. It would be great to see as many of you who can make it come along.

## **CRAFT ITEMS, CONTAINERS WANTED:**

If you are having a clean out over the holidays, please feel free to donate any of the following for a craft stall at the school fair:

- beads (for kids to make bracelets)
- patterned cotton fabrics (for making bookmarks, sandwich wraps, headbands)
- bits of broken crayons (to remelt into colourful recycled crayons)
- small plastic containers to use on the stall (old hummus/dip containers the perfect size)
- scraps of coloured fur, coloured feathers, coloured furry balls, pipe cleaners (to make rock pets)

Please hand in to the office.

## **CARDRONA SKI WEEKENDS**

The dates are: 30 - 31<sup>st</sup> July, 13 - 14 August and 3 - 4 September.

As in previous years, we get a heavily discounted rate on a package for ski / snowboard lessons, lift passes and equipment hire when we go as a group of 15 or more people. It is a great opportunity to make the most of the skiing and boarding at Cardrona with friends from Macandrew Bay school.

It's pretty sociable and a good way to introduce the young ones to the snow. Families are responsible for organising their own accommodation.  
More details to follow

Mike and Trinie Moore. Contact details; email [trinie.moore@gmail.com](mailto:trinie.moore@gmail.com) or phone 476 1343

## **LATE STARTS OR SCHOOL CANCELLATION DUE TO WEATHER CONDITIONS**

As June approaches I thought it might be wise to remind parents of the processes that are in place for our School and other Dunedin Schools in case of adverse weather conditions such as now and ice.

In the event of very dangerous road conditions due to snow or black ice etc a blanket decision is made for the whole of Dunedin by Principals who live in the hill suburbs, after consulting Police etc. This includes Macandrew Bay School.

A decision is made on either a late start at 10.00am or to close Dunedin Schools for the day. It is very important that families listen to the radio if weather conditions are bad in town and particularly listen to the cancellation notices on local radio stations. It is usually on after the 7.30am news and again at 8.00am. The reason these decisions are made are that even if children can get to school the staff often live some distance from the school and up on the hills and we can't guarantee that we can staff the school even if the children can make it.

If you are in doubt please look the School's website as we always post late starts or school closures on our Homepage: <http://macbayschool.edublogs.org> or just google Macandrew Bay School. It is great if you hear school is off that you let your friends and neighbours know too if their children also attend our school.

### **LIBRARY – RANDOM ACTS OF READING**

I am running a Library competition for the next four weeks. I have asked the children to bring me a photo of themselves in a Random Act of Reading. This means an odd place, a funny thing to do and a strange way of reading.

I've explained to them that it must not be dangerous in any way, or promote unsafe ideas, however it would be great to get enough photos to fill up a wall in the Library or the Learning Street.

There will be a first, second and third prize, and possibly a few highly commendeds. These will be small items, the prize not being the object of the exercise. Photoshop not allowed! It must be a real act in a real place.

Entries can be emailed to me a [librarian@macandrewbay.school.nz](mailto:librarian@macandrewbay.school.nz). Please include your child's name and classroom. I'm more than happy to print them out. If you'd like to deliver the photo to school, please write your child's name and class on the back and leave it with Irene in the office. The idea is that it will be a fun activity, children don't have to participate if they don't choose to. I really look forward to seeing pictures come in. Regards Gill

### **CHILDRENS WRITING CORNER**

If I were Winter I would....  
Tell the amazing frog it is time to freeze  
Hug each tree and lump snow on it.  
Force children to wear their coats  
Make the adults wear their slippers in the morning  
Send my frost army over the hill and far over the horizon.  
Flowers find their way up to the surface.

**By Margot.**

If I were Winter I would....  
If I were Winter I would make all the ski fields more enjoyable  
Spread icing sugar over every mountain  
Make all the leaves fall off the trees  
Watch children pop out of their houses and play in the snow.

**By Sammy.**

If I were Winter I would....

Cover the land with a fluffy white blanket

Paint people's cheeks pink

I would send cold animals to a warm place

Sprinkle gentle snowflakes over the country.

And as the flowers bloom

I will take away the frost and come back for the winter.

**By Zara.**

If I was principal I would allow everybody to bring their pets to school and make a hydro-slide it would be fun. The people would have so much fun and the teachers would slide down with people. I would laugh and laugh and laugh.

**By Maeve**

If I was principal I would make a dinosaur park.

**By Ollie**

### **SCHOOL PHOTOGRAPHS**

Karearea children doing circuits- A health Team initiative to promote fitness this term





### **NZPF PRINCIPALS CONFERENCE**

Next week I will be away at the Principals Conference for Wednesday, Thursday and Friday. I am hoping for lots of wonderful professional learning.

### **QUEENS BIRTHDAY WEEKEND**

The school will be closed on Monday 6<sup>th</sup> of June for Queens Birthday Public Holiday.

### **HOME AND SCHOOL MEETING – THURSDAY 16<sup>TH</sup> JUNE**

The next Home and School Meeting will be at 7.00pm in the Staffroom as the 16<sup>th</sup> of June. All welcome.



## SPORTS

### Netball

The link to check the Netball draw is: <http://drawsresults.sportsrunner.net/?org=DNC>

#### **Monday 30<sup>th</sup> May**

Macandrew Bay 1/2 vs Wakari Orange	Court 15	4.30pm
Macandrew Bay Blue vs St Clair Steel	Court 10	3.45pm
Macandrew Bay White vs Bathgate Sapphires	Court 13	5.15pm

#### **Tuesday 31<sup>st</sup> May**

Macandrew Bay 5/6 vs Palmerston Rebels	Yet to be confirmed
--	---------------------

#### **Hockey Draw 1st June**

3.40pm - Mac Bay Manta Rays vs Jelly Sticks MINI FAR 4

4.30pm - Mac Bay Meerkats vs Titans KIWI FAR 4

#### **Kiwi Hoops - (Basket Ball)**

The **Mac Bay Magic** team came up again a VERY tall St Clair team. It was like they were playing on stilts compared with our team. :) We played with grit and determination and scored some great hoops but at the end of the game the tallest team had won. It was played in good spirits and everyone enjoyed the game.

The **Mac Bay Bears** played against a skilled St Peter All Saints team; our team showed some great skill and made some great shots. Well done!

(If there is anyone who is Yr. 3/4 and keen to join this team please let Mr. Mitchell know [amitchell@macandrewbay.school.nz](mailto:amitchell@macandrewbay.school.nz))

#### **Draw for next week 2nd June**

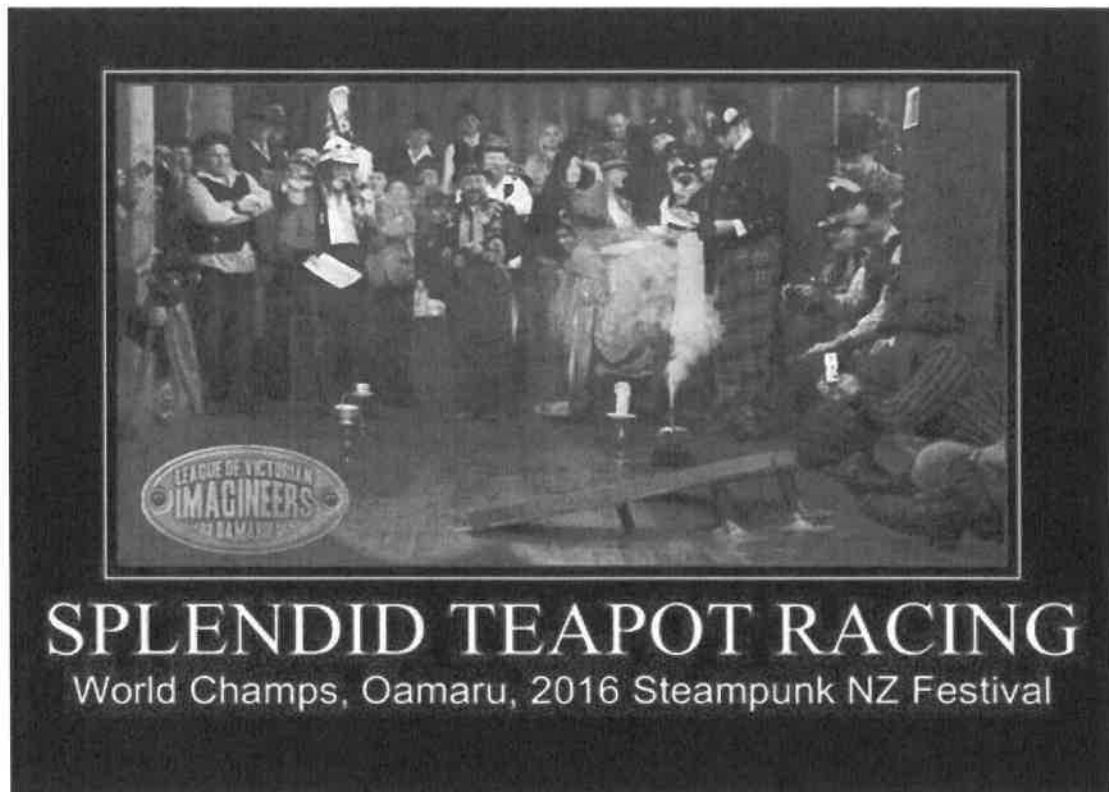
Mac Bay Magic vs Andy Bay Hawks	Court 2	5.25pm
Mac Bay Bears vs Grants Braes Allstars	Court 7	4.50pm B

#### **DATES TO REMEMBER IN TERM ONE**

30 <sup>th</sup> May	BOT Meeting
3 <sup>rd</sup> June	Parent Assembly
7 <sup>th</sup> June	Museum Trip – Tui & Karearea
10 <sup>th</sup> June	Museum Trip – Kowhai & Korimako
13 <sup>th</sup> June	Museum Trip – Kakano & Rata
14 <sup>th</sup> June	Museum Trip – Toroa
15 <sup>th</sup> June	Whanua Hui
27 <sup>th</sup> June	BOT Meeting
30 <sup>th</sup> June	Parent Interviews
1 <sup>st</sup> July	Sausage Sizzle
1 <sup>st</sup> July	Parent Assembly
6 <sup>th</sup> July	Parent Interviews
8 <sup>th</sup> July	Teachers Only Day
4 <sup>th</sup> August	Quiz Night
13 <sup>th</sup> November	School Fair

Bernadette Newlands  
**PRINCIPAL**

## NOTICES



From the people that brought you the extremely successful and fun Gas Works Museum Steampunk fun day comes Steampunk Splendid Teapot Racing, Queens Birthday Weekend.

So what is this? Get a remote control car and put a teapot on it and race it through a set of obstacles- huge fun for big and little kids.

**When:** Sat 4 Jun 2016, 3:00pm–5:00pm

**Where:** Oamaru Club, 32 Severn Street, Oamaru

All Ages

Ticket Information:

- **Adult:** \$20.00
- **Child:** \$10.00
- **Family 2 adults 2 children:** \$50.00
- **Additional Child w/Family Pass:** \$5.00

## **POTTERY CLASSES IN MACANDREW BAY – TERM 2**

Adults - Thursdays 7:00 - 8:30pm six weeks,  
26<sup>th</sup> May to the 30<sup>th</sup> of June \$80.00

Children under 10 yrs - Fridays 3:00-4:30pm six weeks,  
27<sup>th</sup> of May to the 1<sup>st</sup> of July \$80.00

Children 10 years and older - Saturdays 1:30 -3:00pm  
28<sup>th</sup> of May to the 2<sup>nd</sup> of July \$80.00

For bookings or inquiries contact, Zehavit @ [zarbuv15@gmail.com](mailto:zarbuv15@gmail.com) ,0210603907

## **MACANDREW BAY – OTAGO PENINSULA**

4-bedroom family home to rent

6 or 12-month lease. Sunny, private family home on the Peninsula, nestled in native bush with its own woodland paths, stream & bridges. Great for pets.

4 bedrooms, 2 garages & off street parking, log burner, heat pump, 1 bathroom, 2 toilets, 15 minutes from the centre of the city. \$450.00 per week.

Available NOW!

Visit [www.trademe.co.nz/property/otago/macandrewbay](http://www.trademe.co.nz/property/otago/macandrewbay) for photos

Phone: Kim or Chris on (03) 478 0061 or (021) 467 203

Email: [kim@freespirtnz.com](mailto:kim@freespirtnz.com)

## **HONEY FROM THE OTAGO PENINSULA – BRIGHTWATER BEES**

Brightwater Bees Honey is now all harvested, the frames are well capped and in good condition. I have left the bees lots of honey to help them get through the cold of winter. Some newly extracted honey is still runny although most of my honeys start to set within a month of harvesting. If you look on my website you can see there are different types of honey. <http://www.brightwaterbees.co.nz>.

If you would like to buy some honey please contact me via email to place an order, [brightwaterbees@gmail.com](mailto:brightwaterbees@gmail.com).

Send me an email including your name and address, and I will send you my bank Internet account number, so you can settle up, and I will drop the honey off in your letterbox.

The price is \$10 for 500g in a poly jar.

Also, there is still some cut comb honey in plastic containers, also \$10 per box.

Regards,  
Tudor.

### **MUSEUM TRIP**

Name: \_\_\_\_\_

Childs Name: \_\_\_\_\_

Room: \_\_\_\_\_

I would like to come on the bus with my child Y / N

I will take my car and meet the class at the Museum Y / N

---

### **SCHOOL FAIR HELP**

Name: \_\_\_\_\_

Email: \_\_\_\_\_

Phone no: \_\_\_\_\_

Stall I can help on: \_\_\_\_\_

---

### **ROAD CROSSING HELP**

Name: \_\_\_\_\_

Contact Details: \_\_\_\_\_

Days able to help: \_\_\_\_\_

---

### **VOLUNTARY SCHOOL DONATIONS**

**\$25.00 per term per child or \$100 for the 4 terms per child**

Name of child/children \_\_\_\_\_ Rm \_\_\_\_\_

\_\_\_\_\_ Rm \_\_\_\_\_

Amount enclosed \_\_\_\_\_

Signed \_\_\_\_\_

---

**VOLUNTARY SCHOOL ACTIVITY DONATION** – This helps pay for school trips, performances and education outside the classroom.

**\$10.00 per term per child or \$40.00 for the 4 terms per child**

Name of child/children \_\_\_\_\_ Rm \_\_\_\_\_

\_\_\_\_\_ Rm \_\_\_\_\_

Amount enclosed \_\_\_\_\_

Signed \_\_\_\_\_

# Women's Self-Defence

Physical Self-Defence techniques, body-language and voice  
Positive assertivness, self-esteem and confidence  
healthy and unhealthy relationships  
Finding support, supporting others  
knowing your rights.



*Taught by an accredited member of The Women's Self Defence Network - Wāhine Toa*

A fun, supportive day of learning and practicing a range of techniques – mental, verbal and physical – which anyone can use, no matter how big or little they are, for staying safe and empowered! No experience needed.

All abilities and all women welcome including transgender/takataapui.

**Cost:** Free!

**When:** 29 May 2016, 9am - 5pm

**Where:** Portobello (venue confirmed on registration)

To Register (before May 22nd)  
Email Helen: [h.r.martin@icloud.com](mailto:h.r.martin@icloud.com)  
or call Racheal: 0221365155

**KUMAMOTO, JAPAN  
EARTHQUAKE RELIEF**

**+**

**SYRIAN REFUGEE  
SETTLEMENT**



# **CHARITY FAIR**

**SUNDAY 29 MAY  
PINEHILL SCHOOL  
11AM - 2PM**

childrens games/ clothes / books / toys / food stalls /  
auctions : vintage kimono/ Fumiaki Tanaka rugby boots/ etc...

Hosted by: Dunedin Kodomo-Kai Japanese Family Community

For more information or sponsorship please contact:

Izumi - workshopmi@slingshot.co.nz or Kanako - kanakomark@xtra.co.nz



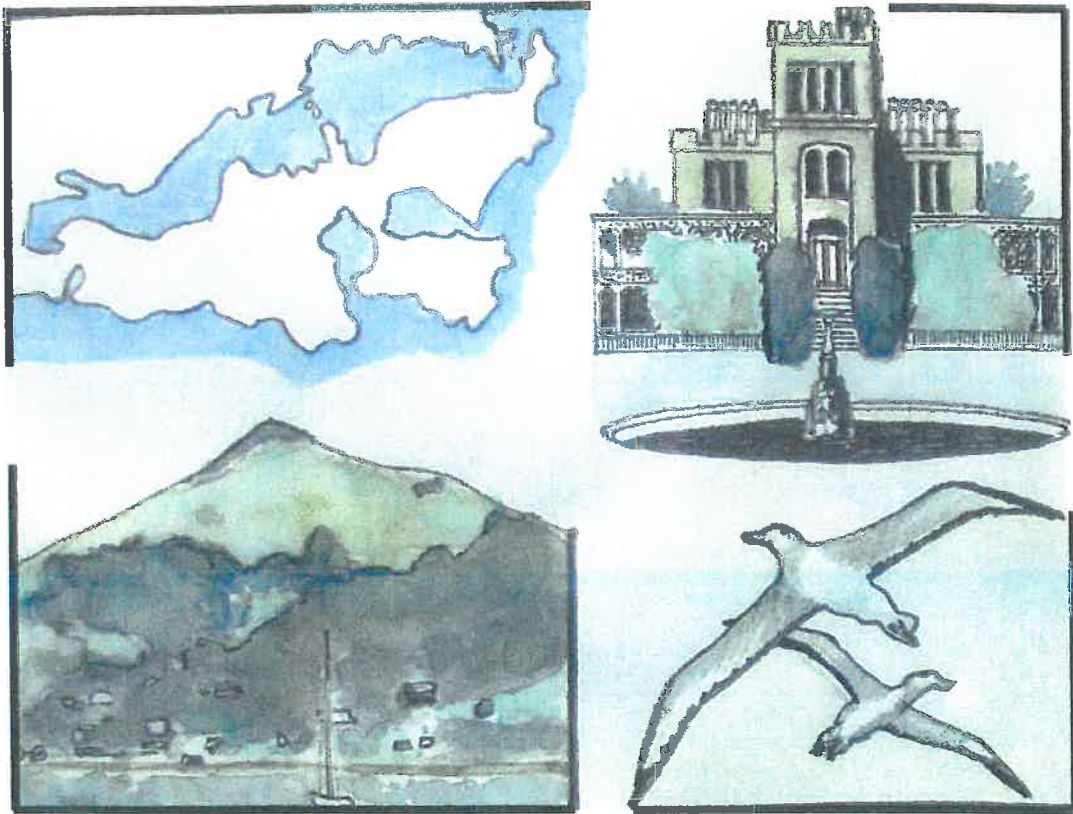
Proceeds to:



**SMART  
SURVIVOR  
PROJECT**



# Otago Peninsula Artists 'Peninsula Images' Exhibition



Bellamy's Gallery  
Macandrew Bay  
3 – 6 June 2016  
11am - 4pm

Supported by Pro Signs Ltd., Strathallan St., Dunedin



# ANZ futureFERNS

## Festival Day

with your favourite ANZ Championship players

Sunday 12 June, More FM Arena,  
Edgar Sports Centre, Dunedin



11am - 12pm



12.30pm - 2pm



2.30pm - 4pm

Celebrate Netball with activities,  
games and autographs!



**NETBALL**  
NEW ZEALAND

Register at  
[ANZfutureFERNS.co.nz](http://ANZfutureFERNS.co.nz)





*Here's a wonderful opportunity for young artists to have their work displayed in a high profile art gallery...*

# OTAGO ART SOCIETY YOUTH ART AWARDS 2016

Sponsored by  
Alan Dove Photography

## 10th to 25th September

To be exhibited at the Otago Art Society galleries  
1st floor, Dunedin Railway Station

### *About the exhibition:*

- There is no set theme.
- Works may be 2- or 3-dimensional.
- Entries are welcome from individuals or school groups.
- Please note: only **one** entry per artist.

### *Four Age Group sections:*

- 5 to 7 years old
- 8 to 10 years old
- 11 to 13 years old
- 14 and 15 years old

### *Prizes:*

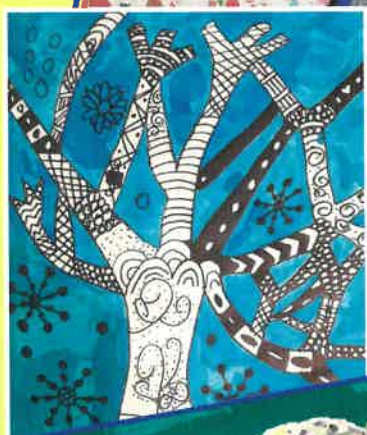
- 4 prizes awarded in each section.
- There will be a prize for Best School.
- All artists will receive a Certificate of Participation when work is collected after exhibition.

### *Receiving of Entries:*

- Please bring your artwork to Otago Art Society, 1st Floor, Dunedin Railway Station, on either Friday 2nd September from 3.00 to 6.00pm, or Saturday 3rd September from 10am to 4.00pm.

**OPENING NIGHT FUN:** Friday 9th September at 5.30pm  
Food Frolic in the Foyer, followed by awarding of prizes.

Inquiries, contact Jeanette Bird, Otago Art Society Administrator,  
phone (03) 477-9465 Email: [otagoartsociety@xtra.co.nz](mailto:otagoartsociety@xtra.co.nz)



**tangata/tāngata:** person/people

Tokoono ngā *tāngata* kei tōku whare e noho ana.  
There are six *people* living at my house.

He *tangata* pai koe.

You are a good *person*.

- this is an example of a classifying sentence