



# Macandrew Bay School



*Simply the best for our children.*

17 June 2016

Dear Parents and Caregivers

Another lovely week in Dunedin! I don't want to jinx things by commenting on our mild winter but it is great to be so close to the shortest day and to be enjoying these calm, mild days. Only three weeks now till School holidays – it is a bit scary how quickly the term and year are speeding by.

## **INQUIRY TOPIC**

The children are highly engaged in this term's inquiry topic investigating communities of animals and insects and how they live and work together.

The teachers are so impressed with all the children are learning and the passion they are showing for this topic. Next week we are looking forward to Ian McGee (Sam and Monty's dad) coming to talk about Bugs.

## **WHANAU HUI**

Thank you to the whanau of our Maori students who came along to our Whanau Hui this week. We had a useful catch up and a good discussion about bringing people in to share more of the local history from a Maori perspective.

## **LIBRARY – RANDOM ACTS OF READING (Notice from Gill, or Librarian)**

I am running a Library competition for the next four weeks. I have asked the children to bring me a photo of themselves in a Random Act of Reading. This means an odd place, a funny thing to do and a strange way of reading.

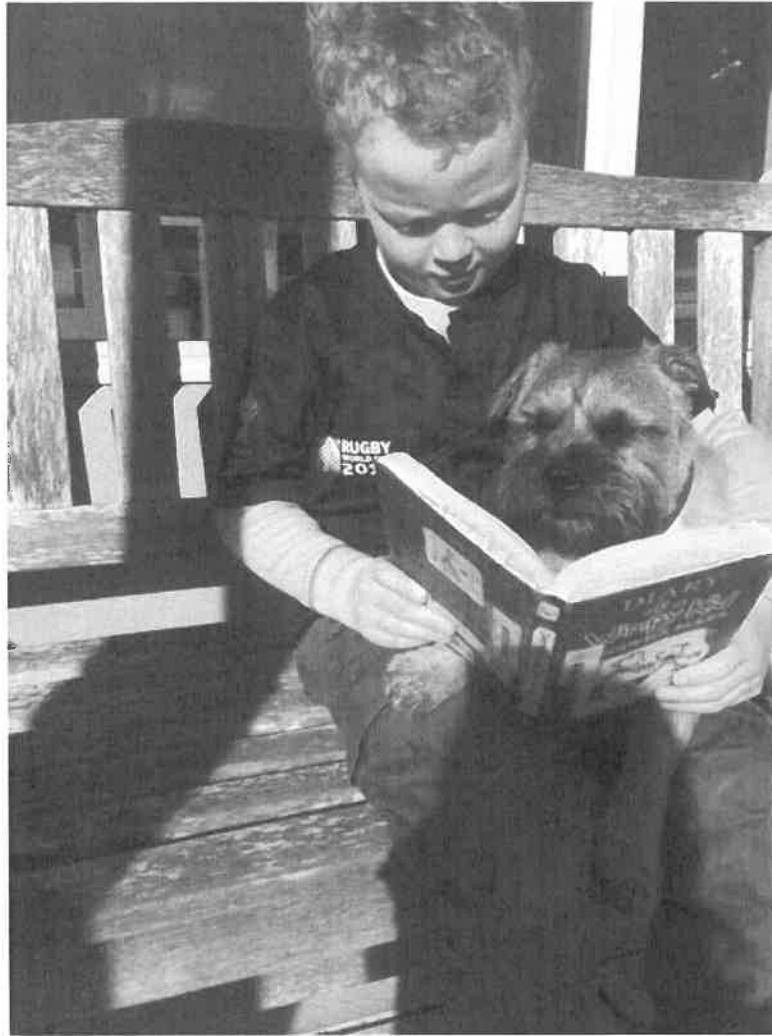
I've explained to them that it must not be dangerous in any way, or promote unsafe ideas, however it would be great to get enough photos to fill up a wall in the Library or the Learning Street.

There will be a first, second and third prize, and possibly a few highly Commendeds. These will be small items, the prize not being the object of the exercise. Photoshop not allowed! It must be a real act in a real place.

Entries can be emailed to me a [librarian@macandrewbay.school.nz](mailto:librarian@macandrewbay.school.nz). Please include your child's name and classroom. I'm more than happy to print them out. If you'd like to deliver the photo to school, please write your child's name and class on the back and leave it with Irene in the office. The idea is that it will be a fun activity, children don't have to participate if they don't choose to. I really look forward to seeing pictures come in. Regards Gill







### **ROAD SAFETY PROGRAMMES WITH JOHN SOMERFIELD**

It has been great to have our Police Education Officer in the School over the past two weeks working with the classes on Road Safety.

He has also worked with the Senior classes on Cycle Safety and on Tuesday this week the Senior classes enjoyed riding their bikes on the Tennis Court and finding out more about how to be safe when out bike riding.

### **ROAD SAFETY AROUND MACANDREW BAY**

Already our Road Safety Steering group is making progress, thanks to Megan Galloway! On Friday last week DCC Staff and DCC Councillor Mike Lord came to do a site visit and observed first hand the speed that people are travelling through Macandrew Bay and the specific issues we have with the bend just before the crossing point.

They plan to address this in two stages. The first stage can be done very quickly with signage going up soon to remind people about the 50kmh speed limit and that people are crossing to and from the walkway. The next stage will be a more major review of the whole issue and what can be done. We are very appreciative of the DDC's quick response and commitment to improving this situation.

## **SAFETY VESTS**

Children and families can do their bit to help keep the children safe on their walks around Macandrew Bay to and from the school by wearing the safety vests the school has provided.

We would love to see many more children wearing them. Obviously it is up to families but it is one easy thing we can do to keep the children safe.

## **MUSEUM TRIPS**

Thank you to all the parents who have come with the various classes on their trips to the Museum last week and this week. The children brought lots of good prior knowledge to the learning that took place in the Museum, which was great to see.





### **MID YEAR REPORTS AND PARENT TEACHER INTERVIEWS**

Reports will still go home in the second to last week of term but we have decided to spread follow up interviews over the last two weeks. We will have an afternoon and evening session on Thursday 30<sup>th</sup> of June and then will have an afternoon session on

Wednesday 6<sup>th</sup> July in the last week. You can go online and book your interviews from next week onwards. The code will come home via a notice on Monday.

### **TEACHER ONLY DAY – FRIDAY 8<sup>th</sup> JULY**

The school will be closed for instruction Friday 8<sup>th</sup> July, which is the last day of term to allow the teaching staff to all attend a course on Writing and Spelling that day. We will work an extra day in December to make up for this at the end of Term 4. This is a great way for us all to attend an extremely useful piece of professional development without it costing the school a lot for relievers. It is many years since we had a Teacher Only Day in school time so we are hoping by giving families lots of notice you will be able to make alternative arrangements.

### **HOME AND SCHOOL MEETINGS**

Our Home and School Meeting was held at school this Thursday.

Our next meeting will be in week 1 of next term at 7.00pm on Thursday 28<sup>th</sup> July. We will be talking about the Quiz Night, and School Fair, along with the Book Fair. New parents are very welcome to join us too.

### **QUIZ NIGHT – 4<sup>th</sup> August**

The Home and School are holding a quiz night on Thursday 4 August. Sue and Neil Foster have again agreed to run the Quiz down at the Macandrew Bay Hall. We are hoping lots of you will organize yourselves into Quiz teams and come along (up to 6 people in a Quiz team and entry cost per team of \$30.00 - \$5.00 each). To register a team for the Quiz Night, please fill out the tear off slip at the end of the Newsletter and return to the School Office. We usually have about 20 teams registered on the night and its always lots of fun. Bring you own nibbles etc and it's BYO drinks, including glasses.

Usually we raise about \$3,000.00 at a Quiz night and about \$1000.00 of this usually comes from a Grocery Hamper we sell prior, with each family hopefully selling a family raffle card and donating a grocery hamper item or two.

Much of the rest of the money raised on the night comes from our wonderful raffle prizes. If you or the business you work for might have anything to donate for a raffle prize would be very gratefully receive raffle prizes at school from now on until the week before the Quiz. A raffle prize could be anything at all from food donations, to vouchers, to unwanted purchases sitting in the cupboard needing a home.

### **QUIZ NIGHT HELPERS NEEDED**

We need a few willing volunteers to help us in the following areas:

- Volunteers to set up the Hall on Thursday afternoon – Should only take ½ an hour to an hour – 6 people required.
- Volunteers on the night to help sell raffle tickets – 4 people.
- Volunteers to make up the raffle prizes on the Monday afternoon 1 August – 4 or 5 people.

Thank you to anyone who thinks they can help with any of these jobs. Please fill he

tear off slip and return it to school.

### **GROCERY HAMPER & RAFFLE CARDS TO SELL**

This week we are sending home our Grocery Hamper Raffle Cards. We are really hoping that families may be able to sell their whole card to family, friends and neighbours. The card has 20 tickets at .50c each so if you sell the whole card you would have sold \$10.00 worth of tickets. Each card is numbered on the back with a number allocated to your family. Could you please return your card, hopefully with all the tickets sold by Monday 25<sup>th</sup> July. If selling raffle tickets comes easily to you we can happily send extra cards home to you on request.

We would also really appreciate if you could look in your pantries and send on or two grocery items along to go in the Grocery Hamper. We usually get fabulous support with this and have often had enough groceries for two hamper prizes overflowing with goodies for the lucky winner or winners to take home with them. There will be a competition between the classes for the class that brings the most grocery items. So can the children take them to their classes and keep them there till we count them. The winning class gets a pizza lunch!.

Many, many thanks for your support with this.

### **PARENT ASSEMBLY DATES THIS TERM**

**A Special Celebration Assembly** - this will be held on Friday 1<sup>st</sup> July starting promptly at 2.00pm so come a bit before this. Parents and visitors to assemble inside the gate on the path near the archway. To celebrate Matariki and our beautiful new space Tutahi (a place where we stand together) we are going to run Assembly a little differently this time.

Please bring a plate and leave it on the tables near Korimako Class – in the end of the Learning Street before the Assembly starts. (from 1.30pm onwards)

All Welcome to come and see the children celebrate our beautiful new facilities. We hope to share afternoon tea together at the end of Assembly.

### **SAUSAGE SIZZLE FRIDAY 1<sup>st</sup> JULY**

The last sausage sizzle for Term 2 is coming up in a fortnight.

Orders must be in to the office on the order sheet included in the newsletter by 9.00am on Wednesday 19<sup>th</sup> June. Sausages \$2.00 each and Juicies \$1.00 each.

### **JUNIOR SCHOOL BUILDING CLUB – Thank you Alan Webber & Bruce Bond**

The children are having a ball and making all sorts of wonderful creations.





## **CARDRONA SKI WEEKENDS**

The dates are: 30 - 31<sup>st</sup> July, 13 - 14 August and 3 - 4 September.

As in previous years, we get a heavily discounted rate on a package for ski / snowboard lessons, lift passes and equipment hire when we go as a group of 15 or more people. It is a great opportunity to make the most of the skiing and boarding at Cardrona with friends from Macandrew Bay school.

It's pretty sociable and a good way to introduce the young ones to the snow. Families are responsible for organising their own accommodation.  
More details to follow

Mike and Trinie Moore. Contact details; email [trinie.moore@gmail.com](mailto:trinie.moore@gmail.com) or phone 476 1343 to find out more about costs for the daily package etc.

## **LATE STARTS OR SCHOOL CANCELLATION DUE TO WEATHER CONDITIONS**

As June is now here I thought it might be wise to remind parents of the processes that are in place for our School and other Dunedin Schools in case of adverse weather conditions such as now and ice.

In the event of very dangerous road conditions due to snow or black ice etc a blanket decision is made for the whole of Dunedin by Principals who live in the hill suburbs, after consulting Police etc. This includes Macandrew Bay School.

A decision is made on either a late start at 10.00am or to close Dunedin Schools for the day. It is very important that families listen to the radio if weather conditions are bad in town and particularly listen to the cancellation notices on local radio stations. It is usually on after the 7.30am news and again at 8.00am. The reason these decisions are made are that even if children can get to school the staff often live some distance from the school and up on the hills and we can't guarantee that we can staff the school even if the children can make it.

If you are in doubt please look the School's website as we always post late starts or school closures on our Homepage: <http://macbayschool.edublogs.org> or just google Macandrew Bay School. It is great if you hear school is off that you let your friends and neighbours know too if their children also attend our school.

## **CHILDRENS WRITING CORNER**

### How bees make honey?

A bee is the only insect that makes honey for humans.  
The bee finds a flower and sucks up the nectar then the bee goes back to the hive.  
The bee chews the nectar for about half an hour, it goes into two sugars glucose and fructose.

The bee spits the honey into cells and put a wax cap on top.  
Bees are clever.

***By Charlie Scott***

## **HOW DO BEES MAKE HONEY?**

Bees are important to the environment. Bees make honey and pollinate flowers. I am going to explain how bees make honey.

The worker bee collects nectar from the flowers with her tube like tongue called a proboscis. Then she swallows it and it goes down in her crop the honey stomach.

Next enzymes in the tummy turn it into glucose and fructose.

The bee flies back to the hive. He spits the honey into cells and puts a wax cap on top.

Bees are the only insect that makes honey. I think bees are useful.

***By Ricky Freeman***

## **IMPORTANT HEALTH INFORMATION – MEASLES PREPAREDNESS – from Southern District Health Board**

### **Measles update**

You may be aware there is currently a measles outbreak in New Zealand, so far mainly affecting communities in the North Island.

This as a timely reminder to check your child's vaccination status and ensure they are up to date with their vaccinations. Please let your school or early childcare centre know your child's vaccination status, if you haven't already done so. They will require written evidence of which vaccines your child has had. You may also use this as an opportunity to review the vaccination status of your whole family.

Two MMR vaccinations provide the best protection for measles, and the vaccine is normally given at 15 months and 4 years of age. The MMR vaccine was not on the childhood immunisation schedule until 1990. That means many adults and parents may not have received the required 2 doses of MMR and are encouraged to contact their practice nurse to discuss catch-up MMR. If you are unsure, you can check with your GP or your Wellchild book for your vaccination history. Catch-up MMR is available for all children and adults who have not received their two MMR doses on today's current schedule.

If a child becomes sick with measles at your school or centre, children that are not considered immune to measles will be excluded.

If you have any questions or concerns please contact your public health nurse, practice nurse, or visit:

[www.health.govt.nz/measles](http://www.health.govt.nz/measles)  
[www.immune.org.nz](http://www.immune.org.nz)

## **SPORTS**

### ***Netball***

The link to check the Netball draw is: <http://drawsresults.sportsrunner.net/?org=DNC>

***Monday 20<sup>th</sup> June - draws unavailable please check for them in the link above***

Macandrew Bay 1/2

Macandrew Bay Blue

Macandrew Bay White

## ***Tuesday 21<sup>th</sup> June***

Macandrew Bay 5/6 vs Green Island Steel      Court      pm

### **Hockey**

Our Mac Bay teams showed great sportsman ship on Wednesday. The **Mac Bay Mantra Rays** played with 4 players against a team clearly new to hockey. They played fair and passed the ball around to set up and score 6 good goals. Ashton played well and made some great passes to the strikers.

The **Mac Bay Meerkats** continued their run of good form with a 8-1 win over the Taieri Vikings. This was another game played in good spirits and our passing and teamwork proved to good for the Taieri team. Charlie Le Comte played a big part in setting up our goals. He showed some good passing skills and also had some good individual runs.

### **Kiwi hoops**

The **Mac Bay Bears** had one of their closest games this season going down by 1 point 7-6. Jackson scored several good hoops in the first half and Cade came very close in the second. Jack Van Baalen was Player of the Day for his hard work on defence and good hustle when they had the ball.

The **Mac Bay Magic** also had a close game against Elmgrove going down 17-15. It was 12 all going into the last 4 minutes but the ball just didn't want to go in for the Mac Bay team. Taylor McLean was Player of the Day for her determination and team work. She came very close to scoring in the last 2 minutes.

### **Hockey Draw -**

Unfortunately the draw is not available at this time.

### **Kiwi Hoops - (Basket Ball)**

### ***Draw for 23rd June***

Mac Bay Bears vs Collumba Blue	Court 7B	4.50pm
Mac Bay Magic vs George St Leopards	Court 4	4.50pm

### **DATES TO REMEMBER IN TERM ONE**

27 <sup>th</sup> June	BOT Meeting
30 <sup>th</sup> June	Parent Interviews
1 <sup>st</sup> July	Sausage Sizzle
1 <sup>st</sup> July	Parent Assembly
6 <sup>th</sup> July	Parent Interviews
8 <sup>th</sup> July	Teachers Only Day
4 <sup>th</sup> August	Quiz Night
13 <sup>th</sup> November	School Fair

Bernadette Newlands  
**PRINCIPAL**

## **NOTICES**

### **JAFFA RACE**

If anyone is looking to buy tickets for the Jaffa Race, taking place on 22nd July. I have plenty to sell! Please email me at [e\\_sibbald@yahoo.co.nz](mailto:e_sibbald@yahoo.co.nz).  
The tickets are for Race 3 and proceeds go to Taieri Parents Centre.  
There are prizes for the first 5 jaffas and the cost of the tickets is \$1 each.  
Thanks, Esther Sibbald

### **MACANDREW BAY – OTAGO PENINSULA**

4-bedroom family home to rent  
6 or 12-month lease. Sunny, private family home on the Peninsula, nestled in native bush with its own woodland paths, stream & bridges. Great for pets.

4 bedrooms, 2 garages & off street parking, log burner, heat pump, 1 bathroom, 2 toilets, 15 minutes from the centre of the city. \$450.00 per week.

Available NOW!

Visit [www.trademe.co.nz/property/otago/macandrewbay](http://www.trademe.co.nz/property/otago/macandrewbay) for photos

Phone: Kim or Chris on (03) 478 0061 or (021) 467 203

Email: [kim@freespiritnz.com](mailto:kim@freespiritnz.com)

### **BROAD BAY HOUSE TO RENT**

Period from 26<sup>th</sup> July 2016 to 20<sup>th</sup> January 2017

- - Excellent sun & harbour views
  - 2x Beaches within 20 meters
  - Quiet friendly street
  - 4 bedrooms
  - Fully furnished
  - Decked outdoor living
  - Heat pump & log burner
  - Dishwasher
  - Spa pool
  - Vegetable garden
  - Off street parking for 4 vehicles
  - Fenced section
  - Outside pets welcome
  - \$400 per week

**Contact: Chris on 0276950572 or Kim on 021 467 203**

## **WONDERLAND FAMILY DISCO**

Put on your dancing shoes and bring the family along to this fun community event.

Friday July 1st, 6.30 - 9.30pm

Only \$5 per adult and kids a gold coin donation

Live music by the Alcoves

Food will be available to buy and a tuck shop for the kids

Adults bring your own drinks and glasses

Cash only, no eftpos available

**SAUSAGE SIZZLE Friday 27<sup>th</sup> May**

Name: \_\_\_\_\_ Room: \_\_\_\_\_

No of Sausages @ \$2.00each \_\_\_\_\_

No of Juicies @ \$1.00 each \_\_\_\_\_

-----

**SCHOOL FAIR HELP**

Name: \_\_\_\_\_

Email: \_\_\_\_\_

Phone no: \_\_\_\_\_

Stall I can help on: \_\_\_\_\_

-----

**ROAD CROSSING HELP**

Name: \_\_\_\_\_

Contact Details: \_\_\_\_\_

Days able to help: \_\_\_\_\_

-----

**QUIZ NIGHT (4<sup>th</sup> August at Macandrew Bay Hall)**

I would like to register a Quiz Team

Name of Team

Registration Paid \$30.00      Yes/No

Name: \_\_\_\_\_

Phone: \_\_\_\_\_

-----

### **QUIZ NIGHT HELPERS**

Setting up Hall Thursday 4<sup>th</sup> August afternoon - Yes / No

Volunteers to sell raffle tickets on the night - Yes / No

Volunteers to make up the raffle prizes on Monday 1<sup>st</sup> August - Yes / No

Name: \_\_\_\_\_ Phone: \_\_\_\_\_

### **VOLUNTARY SCHOOL DONATIONS**

**\$25.00 per term per child or \$100 for the 4 terms per child**

Name of child/children \_\_\_\_\_ Rm \_\_\_\_\_

\_\_\_\_\_ Rm \_\_\_\_\_

Amount enclosed \_\_\_\_\_

Signed \_\_\_\_\_

-----

**VOLUNTARY SCHOOL ACTIVITY DONATION –** This helps pay for school trips, performances and education outside the classroom.

**\$10.00 per term per child or \$40.00 for the 4 terms per child**

Name of child/children \_\_\_\_\_ Rm \_\_\_\_\_

\_\_\_\_\_ Rm \_\_\_\_\_

Amount enclosed \_\_\_\_\_

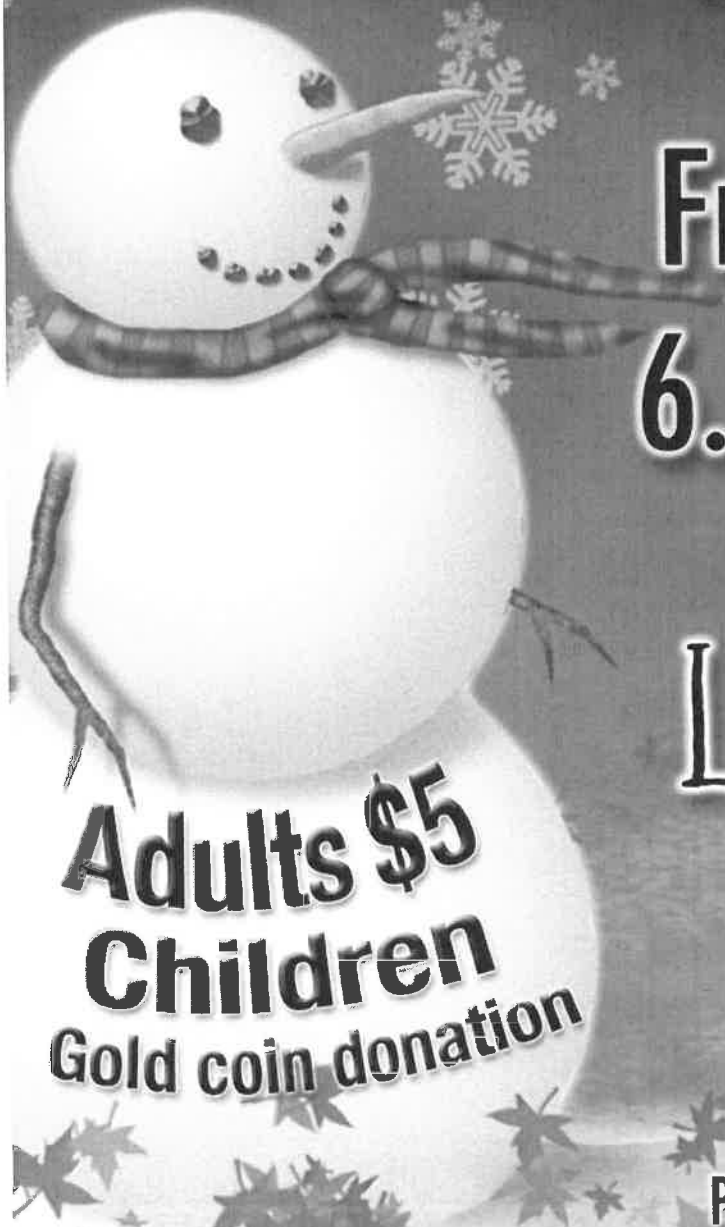
Signed \_\_\_\_\_

-----



Come along to a magical night for the whole family

# Winter Wonderland Family Disco



**Friday JULY 1st**  
**6.30pm-9.30pm**

**Live Music**  
**The Alcoves**

**Adults \$5**  
**Children**  
**Gold coin donation**

Hot food available to purchase  
Please bring cash (No eftpos available)

Children's drinks, food & treats available. Adults BYO drinks & glasses.

## MACANDREW BAY HALL

Proceeds going to Otago Peninsula Scout & Cub Groups

## **WINTER WONDERLAND DISCO - FUNDRAISER**

DATE: Friday 1st JULY 2016

TIME: 6.30pm - 9.30pm

COST: \$5 adult, gold coin donation for children

### **HELPERS NEEDED!!**

A) On the Night - Various helpers are needed for set up and on the night, please see below list and put your name down, thank you

<b>SET UP / DECORATION of Hall. Jacqui to co- ordinate on the day Friday 3pm - 5.30pm</b>	<b>ENTRANCE / MONEY COLLECTION Friday 6.20pm -</b>	<b>BBQ outside for sausages, hamburgers 6pm - 9.30pm. Group of 2 people</b>	<b>Drinks / chips from kitchen. Groups of 2/3 people</b>	<b>Serving vegetarian food options (lentil burgers or sausages)</b>
<u>Names</u>	<u>Names</u>	<u>Names</u>	<u>Names</u>	<u>Names</u>
Jacqui Hay	Hannah Lawrence	Richard Lawrence		

### **SET UP:**

Hall for 3pm onwards to set up tables, chairs and decorate hall - Jacqui to co-ordinate

### **ENTRANCE:**

Ready from 6.15pm onwards to collect money and handout glowstix

### **BBQ:**

Outside main entrance to cook sausage and hamburgers, take orders and serve. Will need table for buns, bread, serviettes and sauces etc. 2 or 3 people to work in teams. Ready from 6pm onwards to start cooking and vibe ready once disco starts

### **DRINKS /CHIPS:**

in kitchen area. 2 people to service drinks and chips and have water available for people to help themselves too.

### **VEGETARIAN FOOD:**

Kitchen area, serve vegetarian sausage or lentil burgers. 2 people. This could also be outside as an option.

## **HELPERS NEEDED!!**

B) PRE- EVENT - Various helpers are needed for purchasing food, drinks, gift items

<b>Purchase lollies, chips and drinks from West</b>	<b>Purchase glowstix</b>	<b>Purchase and Collect bread or bread buns from Couplings. Pre-cut onions</b>	<b>Purchase and Collect sausages and/or frankfurters</b>	<b>Purchase serviettes, tomato sauce, mustard</b>
<u>Names</u>	<u>Names</u>	<u>Names</u>	<u>Names</u>	<u>Names</u>
		Antoinette McLean	Antoinette McLean	
<b>Organize small floats for various stations</b>	<b>Flyer deliveries in area</b>	<b>Flyer emailed to various Peninsula Schools</b>	<b>Poster in shops, dairies around Peninsula</b>	<b>Purchase small Thank you gift for Band members</b>
<u>Names</u>	<u>Names</u>	<u>Names</u>	<u>Names</u>	<u>Names</u>
		Antoinette McLean	Jacqui Hay	
<b>Clean and pack away at end of event</b>				
<u>Names</u>	<u>Names</u>			

Any questions, just email or call me on 0212132507 or [speights5@gmail.com](mailto:speights5@gmail.com)

ERROR: invalidfont  
OFFENDING COMMAND: xshow

STACK:

[9.552 8.592 12.264 18.576 4.848 4.152 12.336 13.32 4.344 8.136 12.84  
6.744 11.016 0.0 ]  
(! " # \$ % & ' ( & ) \* + , & )

# KIDS FITNESS

## WHEN

**Every TUESDAY and THURSDAY  
@ 3.45pm – 4.30pm**



# Winter Holiday Programme Fun!



**LAZER FORCE**

## Holiday Events



**MOANA POOL**



**CHOCOLATE FUN DAY**



**OTAGO museum**

**DISCOVERY WORLD**



**Great Baker**



**Construction Champ**

**Collect Badges**



**Arts Stars**



**Dodgeball Champion**

# "It's more Fun at Magic"

**\*\* WINZ & Magic Discounts \*\***  
**Amazingly Affordable Care...**

**Book Now!**

[www.magickidsclub.co.nz](http://www.magickidsclub.co.nz)



**"Magic for your child's interests"**



4533266  
0224665226



admin@  
magickidsclub.co.nz



Find us on  
**Facebook**







# Winter Holiday Programme Fun!



**LAZER FORCE**

## Holiday Events



**MOANA POOL**



**BOWLING AND PIZZA**



**CHALLENGE DAY**



**Great Baker**



**Construction Champ**

**Collect Badges**



**Nerf Wars**



**Dodgeball Champion**

# "It's more Fun at Magic"

**\*\* WINZ & Magic Discounts \*\***  
**Amazingly Affordable Care...**

**Book Now!**

[www.magickidsclub.co.nz](http://www.magickidsclub.co.nz)



**magic kids club**

*"Magic for your child's interests"*



4533266  
0224665226



admin@  
magickidsclub.co.nz



Find us on  
**Facebook**



# VIBe!



## holiday programme

11-15 July



8.00am-5.30pm | \$45 [additional children \$40]

9.00am-3.00pm 'school day' | \$35

# www.sportotago.co.nz

AGE 5-13 YEARS

**EDGAR CENTRE**  
SPORTS EVENTS FUNCTIONS

Edgar Centre, Portsmouth Drive, Dunedin

cas@sportotago.co.nz

or call 03 474 6421 for more information

**mua:** in front, before

I *mua* ia i te toa.

He was *in front* of the shop.

- this is an example of a locative sentence

-

*mua* can be used to describe relationships in time, for example,

I mahi kai mātou i *mua* i te hui.

We prepared food *before* the meeting.