

# Macandrew Bay School



*Simply the best for our children.*

2 June 2017

Kia ora koutou katoa,  
Greetings Parents and Caregivers

Have a good long weekend everybody. The school will be closed to observe Queens Birthday holiday on Monday and we will look forward to seeing everybody back at school on Tuesday next week.

## **TOITU TRIP**

We were invited to bring a small group of ten children into Toitu Museum today to experience some learning activities relating to the History of Otago. Thank you Mrs Ward for taking the children from Yr. 5 and 6 in and giving them the opportunity to work with Sara in at the Museum.

## **STUDENT TEACHERS IN CLASSROOMS**

This week was the first week of a three week posting for the Final Year Student Teachers in our school. These students have been in their respective classrooms since the start of 2017 and are now getting an opportunity to do more sustained teaching with the support of the classroom teachers. We are really enjoying having them in the school for this time.

## **BIKES AT LUNCHTIME NEXT FRIDAY**

Every month we are trailing having a fun session on our bikes at lunchtime instead of our usual Friday scooters. Next Friday the 9<sup>th</sup> of June we are going to enjoy being on our bikes on the tennis court and Miss Brown and her helpers will set up a bit of a circuit.

The rules are we don't ride our bikes in the playground but once we have reached the school grounds we push our bikes to the bike stands and they stay there till lunchtime. At lunch time we then push them over to and later back from the tennis court area. Of course we must also wear our helmets when we are riding our bikes. If this sounds like something your child would like then maybe they could bring their bike to school on the 9<sup>th</sup>. It is important that they do all go home again at the end of the day as bikes left at school outside over a weekend can sometimes go missing.

## **WINTER WEATHER AFFECTING SCHOOL STARTING TIMES ETC**

Well I guess now that we are in June it is timely to remind families what might happen if the weather turns particularly nasty and snow or ice makes the roads so dangerous that schools around the city need to be delayed till 10am or closed for the day.

In the event of very dangerous road conditions due to snow or black ice etc a blanket decision is made for the whole of Dunedin by Principals who live in the hill suburbs, after consulting Police etc. This includes Macandrew Bay School.

A decision is made on either a late start at 10.00am or to close Dunedin Schools for the day. It is very important that families listen to the radio if weather conditions are bad in town and particularly listen to the cancellation notices on local radio stations. It is usually on after the 7.30am news and again at 8.00am. The reason these decisions are made are that even if children can get to school the staff often live some distance from the school and up on the hills and we can't guarantee that we can staff the school even if the children can make it.

If you are in doubt please look the School's website as we always post late starts or school closures on our Homepage: <http://macbayschool.edublogs.org> or just google Macandrew Bay School. It is great if you hear school is off that you let your friends and neighbours know too if their children also attend our school. We will also attempt to send all families an email so check your emails too.

### **YR 5 OVERNIGHT STAY AT THE MUSEUM-13 JUNE**

We have been thinking for a while it would be great to take our Year 5 children on an overnight stay camp the year before their big Yr. 6 Camp as preparation and also a great experience for them. This year we have booked an overnight stay at the Otago Museum for the Year 5 children in Korimako Class on the 13<sup>th</sup> of June. It costs \$35 to stay at the Museum overnight and that includes dinner and breakfast. We applied for a grant from the Bendigo Valley Trust to help cover this cost and have now heard that we have been successful so there will only be \$10 to pay per child for this overnight stay. Please send the money to Mrs Cron in the office along with your health and consent forms.

The children will go in at 3pm, leaving school at 2.30pm on a bus and would leave the Museum at 9.30am the following morning. We have sent home information with consent forms and health profiles that need to be filled in and returned as soon as possible.

We have realized they will need to bring two school lunches on Tuesday morning- one for Tuesday and another for Wednesday as we go straight to school from the Museum on Wednesday morning.

Get in touch with Bernadette if you have any questions you would like to clarify.

### **MATARIKI CELEBRATIONS- HANGI**

For the first time we are going to take part in the Puaka / Matariki Celebrations that are taking place across the region. Mark the evening of Wednesday the 21<sup>st</sup> of June in your calendar as we plan to have a hangi tea at school and celebrate this special time of year.

We would love some help to prepare food for the hangi and to help with it on the day so if you think you could help please let us know. There will be a small charge to contribute towards the costs of the kai of \$5 per head. Also if any families had any good vegies available from their gardens to donate for the hangi that would be wonderful to know about prior to us ordering in food.

Rob Wells has been incredibly helpful from Tahuna, explaining how they do their hangi each year and Tahuna is kindly lending us their hangi baskets and irons and tongs etc

Thank you to Tony Reid for his offer of firewood. That is a great help. Do we have any kind

people who would help dig the two hangi pits on the Wednesday morning? We would also love some help to prepare the vegetables if that is possible please, either on Wednesday morning if possible or after school on Tuesday night?

There is a notice at the back of the newsletter where you can order your hangi meals and volunteer any help you may be able to offer.

We are going to ask families who want to take part in our hangi to preorder and prepay for their hangi meals. ( \$5 per person). That way we know exactly how much food to prepare and buy in. We will aim to lift the hangi at about 5pm or 5.30pm and eat shortly after.

It would be fun to do a lantern procession after we eat around the school so for those who would like to do this can you make a lantern at home and bring it along. Some of you may have them already from the Lantern Festival that occurs in the city each year.

### **OTAGO SPELLING QUIZ**

We have sent home a notice this week for 9 of our top spellers and are keen to enter and prepare three teams to take part in the Otago Spelling Quiz to be held in at Tahuna Intermediate Hall on Wednesday the 21<sup>st</sup> of June. Unfortunately it is the same day as our hangi but we could keep kai for the children if their families would like them to do both on the same evening. Good luck children.

### **PROSPECTIVE TAHUNA INTERMEDIATE ENROLMENT SCHEME**

Tahuna Intermediate has been asked by the MOE to put in an enrolment scheme to help them avoid overcrowding. They are asking current and future families and contributing schools to give feedback officially about their prospective enrolment zone.

They have proposed to include all of the Otago Peninsula in their zone so this should not compromise entry for any of our pupils to Tahuna Intermediate. You can go to their website to find out more.

Responses needed to be submitted before the 1<sup>st</sup> of June. Our school BOT discussed this at our meeting this week and have decided to write in support of the proposed enrolment zone as children on the Peninsula would still have automatic right of entry to Tahuna under the current proposal.

### **FUTURE ENROLMENTS AT MACANDREW BAY SCHOOL**

We need to have up to date information about children who are likely to attend our school in the future and so if you have a pre-school child or know of a neighbour or a friend with a child who plans to send them here in the next few years then please get them to ring or email the school with the child's name, date of birth, address and parent's contact phone number. That would be really helpful for us in planning for the future.

We are particularly keen to find out if there are any New Entrants likely to start in Term 4 this year as at the moment it looks like we don't have any children turning 5 then which seems rather unusual.

Children usually start coming along for valuable pre- school visits to the New Entrant classroom about 6 weeks before they are due to start and this helps them transition successfully to school. Get in touch with us here at school about 2 months prior to your

child's birthday to get this all arranged.

### **SOCCKER COACHING AT SCHOOL**

Football South are sending football coaches to school to work with each class for ½ hour each Friday for some weeks this term when the weather is suitable. Sadly there has been lots of rain on Fridays so far this term.

The children are really enjoying developing their football skills with two enthusiastic coaches.

### **ENTERTAINMENT BOOKS (Fundraiser)**

We now have Entertainment Books at the office, if you would like one or know someone wanting to purchase one please let them know. You can also order on line if you would prefer by going to [www.entbook.co.nz/260e090](http://www.entbook.co.nz/260e090) you could get either an electronic version or book form. For each book we sell the school receives \$11.00, which, goes towards resources for the children.

### **CHEESE ROLLS - A warm winter lunch**

Today was our first cheese roll lunch. The remaining dates are:

- 9 June, - 16 June, - 23 June, - 7 July

The cheese rolls will be \$1 each and will be made with wholemeal bread. **Could you please ensure that the correct money is dropped into the office in a named envelope with the money inside prior to the Thursday you wish to buy them. Please note your child's class.** If you wish to place one order for all or some of the future dates that is fine just include the details of what dates your order covers.

If you would like to pay by depositing the money into the bank account this is the account number: **Home & School 02 910 0056556 000**. Please put your child's name in as a reference.

The cheese rolls will be heated and ready for the children to collect in their lunch boxes to prevent unnecessary waste.

This will be a warm treat on these cold days.

### **PIZZA LUNCH FOR RATA CLASS**

The class that won the pizza lunch from the Home and School for the most grocery items was Rata class. This is almost turning into a tradition as Rata class always do extremely well. We will let you know soon which day they will be having pizza for lunch.

### **PARENT ASSEMBLY- FRIDAY THE 9TH OF JUNE**

We plan to have just one Parent Assembly this term and that will be next week on the 9<sup>th</sup> of June, starting at 2.15pm in Tutahi- our big library space. It would be great to see you there.

Korimako Class will be leading the Assembly and Rata, Kowhai and Tui will be presenting

a class item and Toroa, Kakano and Karearea will be singing for us.

The reason we are just having one Assembly is because we are going to try and mix up the classes and run some passion projects on Friday afternoons. We also have trips to the Art Gallery in the last week of term, including the last Friday of term so it just didn't work out to fit in two assemblies this time. Next term we will definitely be back to two assemblies.

### **TRIPS TO THE ALBATROSS COLONY -27, 28, 29 JUNE**

We have just booked in to do the 'Saving our Seabirds' programme at the Albatross Colony later in the term at the end of June.

On Tuesday the 27<sup>th</sup> of June Tui and Toroa class will be going in the morning.

On Wednesday the 28<sup>th</sup> of June Korimako and Rata class will be going in the morning.

On Thursday the 29<sup>th</sup> of June Kowhai, Kakano and Karearea will be going in the morning

It is many years since we have been to the Albatross Colony so it will be great to head down there again and it will fit in very well with this term's topic on endangered animals and what we can do to help them survive. It will be essential to have some parent volunteers to help with supervision so if you would like to come and help out fill out a notice and return it to school.

We will travel by bus to and from the Albatross Colony but may need to ask the parent volunteers to carpool down to the colony as it may be a tight fit with two Senior classes on the bus together.

### **ART GALLERY TRIPS- 30 JUNE, 5,6,7 JULY**

Towards the end of the term all classes will be going to the Art Gallery for a visit and an Art Workshop with John Nuemegan, the Art Gallery Educator.

Toroa are going on Friday 30 June in the morning

Tui are going on the 5 July in the morning

Rata are going on the 5<sup>th</sup> of July in the afternoon

Korimako are going on the 6<sup>th</sup> of July in the morning

Kakano are going on the 6<sup>th</sup> of July in the afternoon

Karearea are going on the 7<sup>th</sup> of July in the morning and Kowhai are going on the 7<sup>th</sup> of July in the afternoon.

We will be travelling by bus to and from the Art Gallery. Parents are very welcome to come with us in on the bus and we would love to have some help with supervision.

The 7<sup>th</sup> of July is the last day of Term 2

### **ROAD SAFETY VESTS**

We would love to see all our children wearing their road safety vests if they are walking, biking or scootering to and from school. They would be much safer if this was the case!

Helmets are always compulsory when biking and would probably be a good idea when on a scooter too. If children are seen without their helmet when on their bike we will be letting their parents know.

## **ROCKBOURNE HOUSE JEWELLERY VIEWING NIGHT- 29 JUNE**

The Home and School are holding a jewellery viewing at Rockbourne House on Thursday 29 June at 7pm. Tickets to this event are \$25, this includes a drink, nibbles, a pamper treatment and two raffle tickets to be drawn on the night. This will be an opportunity to privately view the amazing jewellery sold by Rockbourne and a great chance to catch up in a relaxed environment.

Tickets are limited to 45 people so invite your mother, your friends and grab your tickets from Irene at the school office. Additional raffle tickets can also be purchased for \$1 each – prizes will include a hamper, a beautiful necklace and a \$20 voucher to spend at Rockbourne. Get your name down quick!

All the money raised from this fundraiser will be donated to Chris Fenwick to help show our support and care for Nic Hedley and Chris' children in this difficult time of loss.

## **VOLUNTARY SCHOOL DONATIONS**

Each year we ask for a Voluntary School Donation each term and this money is used to buy reading books, maths equipment, musical instruments, sports equipment, library books and help provide Teacher Aide Support for the children in the classes. Being a Decile 10 School means our operational funds are not all that generous. Our suggested School Donations this year will be the same amount as last year - \$25.00 per term or \$100.00 per child. You are more than welcome to pay these per term or for the whole year – whichever suits you. Some parents have set up regular small direct debit contributions and that is fine. It is worth parents knowing that the receipt you receive for any donations made to school can be used for an income tax credit from Inland Revenue. You can pay school donations by internet banking but it is great if you also email and let us know you have done that and then Irene can keep track of all these payments. You need to state clearly your child's name and what the money is for in the reference information.

***Macandrew Bay School Bank Account:*** 02 0900 0000233 00 Please remember to put your child's name in the reference. (Please note this account is **only** for School Donations, Stationery, Sports fees etc).

## **VOLUNTARY ACTIVITY DONATION**

The suggested Activity Donation again is \$10.00 per child per term, or you may wish to pay \$40.00 for the whole year. This money is used to help cover the costs of the children travelling to the Museum, Art Gallery, Sports Events and pays for visits to school by different performing groups etc. Please fill in the form below and return to the Office if you are able to contribute in this way.

Depending on your income you may be able to claim one third of your school donation back from the IRD by asking Irene for a receipt and completing a form IR526, sending it to the IRD. Further details and a link to the form are on the IRD website:

<http://www.ird.govt.nz/income-tax-individual/tax-credits/donations-taxcredits/donations-taxcredits.html?tax%20credit%20for%20donations>

## **USEFUL APP FOR YOUR PHONE THAT HELPS WITH COMMUNICATION WITH SCHOOL**

Last year we signed up to a very useful app called PT Calendar or the Parent Teacher Calendar App. Once you have downloaded the free app to your phone you can go in and choose Otago as your region and Macandrew Bay School as your school. Once this is loaded you can then go on it to see what is coming up on the calendar, report that your child is absent (by phone, SMS or email), find contact email addresses for your child's teacher, read the latest newsletter, or read information about our school. It also allows us to send a text to any parents who are signed up to our school if we had something happen that we needed to communicate with parents about e.g. an early closing of the school if we were flooded or had some sort of emergency. We can also email all our parents in case of an emergency using etap our Student Management system, as long as we have your correct email addresses on our database.

Thank you to the local businesses who are advertising on the PTC Calendar app and helping bring this useful service to us at no charge.

Sue Pierre, Arlo Fenwick, Nelly Hedley, Harper Levy & Leo Carson

A big thank you to Sue Pierre for all the work she does to keep our school environment beautiful. The children really love working with Sue at lunchtimes. She is often to be seen here in the weekends working away too!

## **NOTICES FOR NEWSLETTER**

Any notices for the newsletter should be in on Thursday afternoon please. It makes the compiling of the newsletter so much easier if they are in to the Office by then, either by email or by dropping a notice into school.

## **MAGIC KIDS AFTER SCHOOL CARE OPTION**

We are very lucky to have Magic Kids providing after school care based at the Macandrew Bay School Library five days a week. To book your child in, even for the odd day ring Magic Kids at 453 3266 or visit their website. [www.magickidsclub.co.nz](http://www.magickidsclub.co.nz)

## **MACANDREW BAY SCHOOL SWEATSHIRTS**

We have had a number of requests for another run of the school sweatshirts. In order to be able to provide these on an ongoing basis we have set up an ongoing order with Promo-X at 28 McBride Street, South Dunedin ph. 456 4303. The youth sizes can be purchased from them for \$33.90 – this is for the thick blue hoodie with embroidered logo on the front and Macandrew Bay printed on the back. Adult sizes are available at \$35.10. The youth sizes available are from youth X-small up to youth X-large. We have samples available to see at school. This is a great option for children to wear in the cooler weather at school.

## **DATES TO REMEMBER IN TERM TWO**

9 June	Parent Assembly
13 June	Y5 Overnight Stay at the Museum
21 June	School Hangi – Matariki Celebrations
21 June	Otago Spelling quiz

27-29 June	Albatross Colony visits
29 June	Rockbourne Jewellery Evening
30 June	Art Gallery - Toroa - am
5 July	Art Gallery - Tui - am
5 July	Art Gallery - Rata - pm
6 July	Art Gallery - Korimako - am
6 July	Art Gallery - Kakano - pm
7 July	Art Gallery - Karearea - am
7 July	Art Gallery - Kowhai - pm

Bernadette Newlands  
PRINCIPAL

## **SPORTS**

### **Hockey**

The draw for Wednesday 7<sup>th</sup> June

Mac Bay vs SBS Jelly Beans

3.40pm **Grade:** Mini **Field:** PAV4

Mac Bay Gladiators vs Warrington Warlocks

5.20pm **Grade:** Kiwi **Field : McMillan Turf  
to be confirmed**

### **Netball**

The draw for 5<sup>th</sup> June - Year 1/2– No Game

Mac Bay Seals

Mac Bay Penguins

The draw for 6<sup>th</sup> June – Year 3/4 – No Game

Mac Bay Miracles

Mac Bay Marvels

The draw for 6<sup>th</sup> June – Year 5/6

Mac Bay Magic vs St FX Steel

5.15pm

EC5

## **NOTICES**

### ***JUNE MESSY CHURCH ! Next Friday Morning-- 9th!***

In our Learning Hub/ Library

Yummy Breakfast @ 7.30!

Followed @ 8.00 with Songs, Music, Stories, Crafts!

Finishing by 8.45am – ready for school!

Everybody Welcome! Enquiries - Trinnie, Alison, or Sheila.

### **BEFORE SCHOOL CARE NEEDED**

I am looking for before school care for my daughter who is in Kowhai.

Monday-Friday, 7:30-8:30 - starting within 2 weeks, if you can help please phone

Helen 4760-121



### **HAVE YOU GOT A DONKEY? Are you fundraising?**

Otago Peninsula Trust is planning a Glenfalloch Gala Day for our 50<sup>th</sup> anniversary. In the spirit of Glenfalloch in days gone past we are looking for a Donkey for Donkey rides (or just petting), musicians, entertainers, yacht races... and we'd love our locals to be involved. There's also the opportunity for fundraising stalls for local schools and groups for which there is no charge. The Gala will be held on Sunday 15<sup>th</sup> October from 10.30 till 3.30pm

Please contact [glenda@albatross.org.nz](mailto:glenda@albatross.org.nz) 4761775 if you'd like to get involved in this fun celebratory event.

<b>GLENDA BRUCE</b> Events/Administration +64 3 476 1775 Cell 027 387 6150 PO Box 492, Dunedin	 <b>GLENFALLOCH</b>	
<b>GLENFALLOCH WOODLAND GARDEN</b> <b>GLENFALLOCH GREEN BIKES</b> <b>GLENFALLOCH RESTAURANT</b> <a href="http://www.glenfalloch.org.nz">www.glenfalloch.org.nz</a>	 <b>OTAGO PENINSULA TRUST</b>	
<b>OTAGO PENINSULA TRUST ENTERPRISES</b>		

### **MACANDREW BAY SINGERS**

Do you enjoy singing for fun?

Come along to 'the Library Hub' on Wednesdays 7-8pm.

This small group of men and women meet to enjoy community singing together and you are welcome.

### **BOOKS & GIFTS**

I have the books back again this term and can be viewed in the office. I get them for a fortnight each time and this lot will be returned to the provider on Tuesday 23 May. They make great presents for birthdays and Christmas.

### **MACANDREW BAY POTTERY FOR KIDS TEAM 2**

Mondays 4:15 -5:30pm

Starting 22 May

Booking and details Zehavit 0210603907

[zarbuv15@gmail.com](mailto:zarbuv15@gmail.com)

**VOLUNTARY SCHOOL DONATIONS – Bank A/c 02 0900 0000233 00**

**\$25.00 per term per child or \$100 for the 4 terms per child**

Name of child/children \_\_\_\_\_ Rm \_\_\_\_\_

\_\_\_\_\_ Rm \_\_\_\_\_

Amount enclosed \_\_\_\_\_

Signed \_\_\_\_\_

-----  
**VOLUNTARY SCHOOL ACTIVITY DONATION – Bank A/c 02 0900 0000233 00** -This helps pay for school trips, performances and education outside the classroom.

**\$10.00 per term per child or \$40.00 for the 4 terms per child**

Name of child/children \_\_\_\_\_ Rm \_\_\_\_\_

\_\_\_\_\_ Rm \_\_\_\_\_

Amount enclosed \_\_\_\_\_

Signed \_\_\_\_\_

-----  
**CHEESE ROLLS – Bank A/c 02 0910 0056556 000**

**Name:** \_\_\_\_\_ **Class:** \_\_\_\_\_

Number of Cheese Rolls@ \$1.00ea: \_\_\_\_\_

-----  
**ART GALLERY TRIP**

Childs Name: \_\_\_\_\_ Class: \_\_\_\_\_

I can come and help – Name: \_\_\_\_\_

I will be coming on the bus \_\_\_\_\_

I will be going in my car \_\_\_\_\_

-----

## **ALBATROSS COLONY TRIP**

Childs Name: \_\_\_\_\_ Class: \_\_\_\_\_

I can come and help – Name: \_\_\_\_\_

I will be coming on the bus \_\_\_\_\_

I am willing to take my car and carpool \_\_\_\_\_

---

## **NEW FOR ENTRANTS – ENROLMENTS 2017,2018,2019**

Childs Name: \_\_\_\_\_ D.O.B \_\_\_\_\_

Parents/Caregivers Name: \_\_\_\_\_

Address: \_\_\_\_\_

Telephone: \_\_\_\_\_

---

## **HANGI AT SCHOOL – WEDNESDAY 21<sup>ST</sup> JUNE – Bank A/c 02 0910 0056556 000**

Family Name: \_\_\_\_\_

We would like to order \_\_\_\_\_ hangi meals at \$5.00 each.

Total cost to pay: \$ \_\_\_\_\_

If any of you would be able to help with the hangi please circle any of the following that apply where you think you might be able to help out.

Could help with firewood:

Have garden vegetables to donate:

Could help prepare vegetables:

Could help dig the hangi pits:

Name: \_\_\_\_\_ Telephone: \_\_\_\_\_

# Trapping Workshop



Learn more about how to monitor and trap possums, and other pest species, in a safe and humane way.

Join the OPBG team for a trapping workshop:

**When:** 17 June, 2017

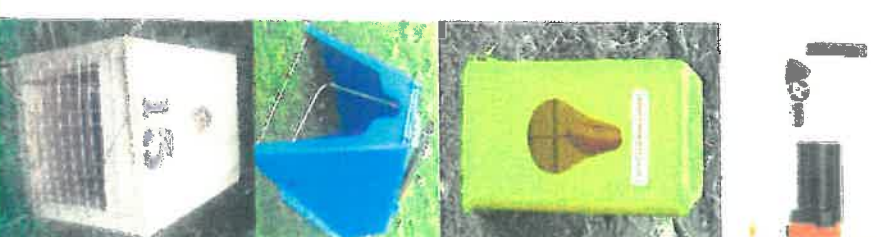
**Time:** 2:30pm - 4:30pm

**Where:** Macandrew Bay Community Hall  
(Cnr Greenacres St and Portobello Rd)

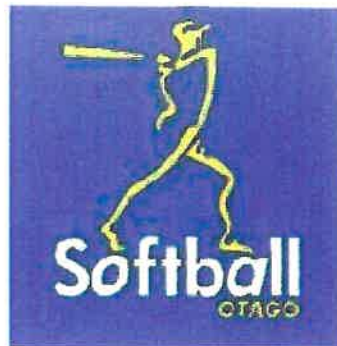
This is a hands-on workshop where you get the chance to learn about and try different trapping techniques needed to target possums, rats, and mustelids (ferrets, stoats and weasels). We will cover techniques to increase the likelihood of success, monitoring methods, data collection, and health and safety.

There is NO cost for this workshop. We look forward to seeing you there.

*Please RSVP by Monday 12<sup>th</sup> June to [opbg11@gmail.com](mailto:opbg11@gmail.com) or 021 263 0566*



# 2017/18 Otago Girls Under 13 Softball



## **OTAGO SOFTBALL ASSN**

### **WINTER SKILLS TRAINING FOR FEMALES AGED 9 – 12 YEARS**

#### **QUERIES AND INFORMATION**

Matt & De Thomson – Coaches  
[de\\_matt\\_thomson@yahoo.co.nz](mailto:de_matt_thomson@yahoo.co.nz)  
De 022 371 9922

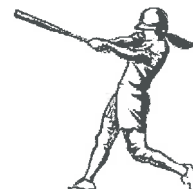
Lynne Harwood - Manager  
[lynneharwood@ymail.com](mailto:lynneharwood@ymail.com)  
027 350 0226

Sessions will cover fundamentals of softball to build confidence and capability leading up to trials for the Otago Girls Under 13 2017/18 season\*

\*Age eligibility, under 13 as at 31/12/2017



Join us to swing a bat,  
throw a ball  
& run some bases



9utterstock 203653612

**When:** June 18<sup>th</sup> and June 25<sup>th</sup>  
**Where:** The Edgar Centre 1.30pm – 2.30pm  
**Cost:** \$2.50 Entry Fee



**Exciting opportunity! Young artists' work displayed in a high profile art gallery:**

# Otago Art Society *Youth Art Awards 2017*

SPONSORED BY ALAN DOVE PHOTOGRAPHY

## **ABOUT THE EXHIBITION:**

- There is no set theme.
- Works may be 2- or 3-dimensional.
- Please note: only one entry per artist.
- Entries are welcome from individuals or school groups.

## **RECEIVING OF ENTRIES:**

Please bring your artwork to Otago Art Society,  
1st Floor, Dunedin Railway Station, on either  
Friday 8th September from 3.00 to 6.00pm, or  
Saturday 9th September from 10am to 4.00pm.

To be exhibited at the  
Otago Art Society galleries  
1st floor, Dunedin Railway Station

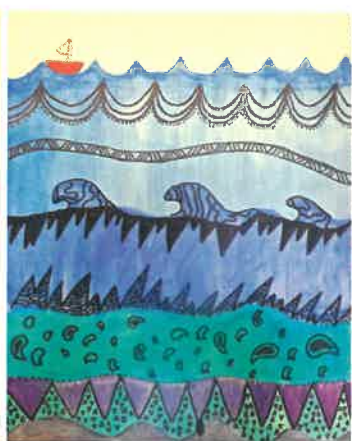
16th September  
to 1st October

## **Four AGE GROUP sections:**

- 5 to 7 years old
- 8 to 10 years old
- 11 to 13 years old
- 14 and 15 years old

## **PRIZES:**

- 4 prizes awarded in each section.
- There will be a prize for Best School.
- All artists will receive a Certificate of Participation when work is collected after exhibition.



**Opening Night Fun: Friday 15th September at 5.30pm.**  
**Food Frolic in the Foyer, followed by awarding of prizes.**

o | a  
s



Enquiries to the Administrator  
Otago Art Society  
Phone (03) 477 9465  
Email: [otagoartsociety@xtra.co.nz](mailto:otagoartsociety@xtra.co.nz)

# AN INVITATION

## For young artists to be part of the

### OTAGO ART SOCIETY

# YOUTH ART AWARDS 2017

KINDLY SPONSORED by: ALAN DOVE PHOTOGRAPHY

16<sup>th</sup> September – 1<sup>st</sup> October

To be held at the  
Otago Art Society,  
DUNEDIN RAILWAY STATION, ANZAC AVE, DUNEDIN

We are delighted to advise the Otago Art Society's **Youth Art Awards** is on again for 2017. The Exhibition is scheduled to be held in September, opening on Friday 15<sup>th</sup> September at 5.30pm.

There is no set theme for the exhibition, works may be 2 or 3 dimensional and there are sections for ages 5-7, 8-10, 11-13, and 14-15 years old. Four prizes will be awarded in each section and all children will be presented with certificates acknowledging their participation at the end of the exhibition. There is also a prize for Best School.

This exhibition is a wonderful opportunity for children to have their art work displayed in a high profile art gallery. We would therefore appreciate if you could announce this event in your newsletter, display the attached poster and encourage children to enter. **One entry per child** and entries are welcome from either individual children or school groups.

Further details regarding receiving times/days for artwork and exhibition opening information will be sent late July.

For any enquiries please do not hesitate to contact me at Otago Art Society.

Yours faithfully

Jeanette Bird  
Administrator

Phone: 03-477-9465

Email: [otagoartsociety@xtra.co.nz](mailto:otagoartsociety@xtra.co.nz)

**manaaki(tia):** look after, care for, show respect or kindness to

Ka *manaakitia* te harakeke e au.

The flax will be *looked after* by me.

- this is an example of a passive sentence

-

Mā mātou koutou e *manaaki*.

We will *take care of* you.

- this is an example of the agent emphatic

-

Ka *manaaki* te tangata whenua i ngā manuhiri.

The people of the land/marae will *care for* the visitors.

- this is an example of an active sentence